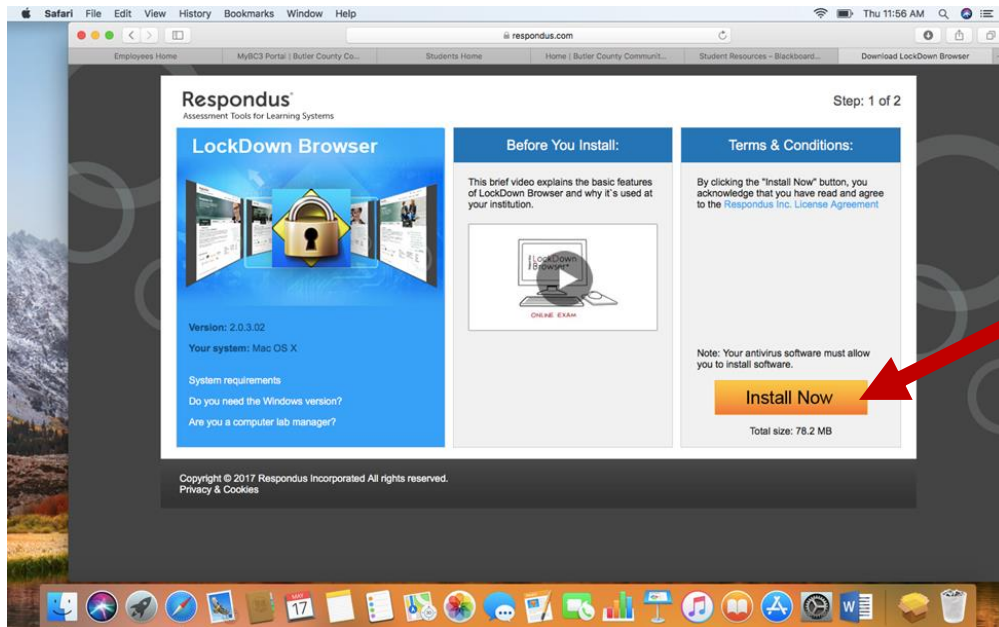
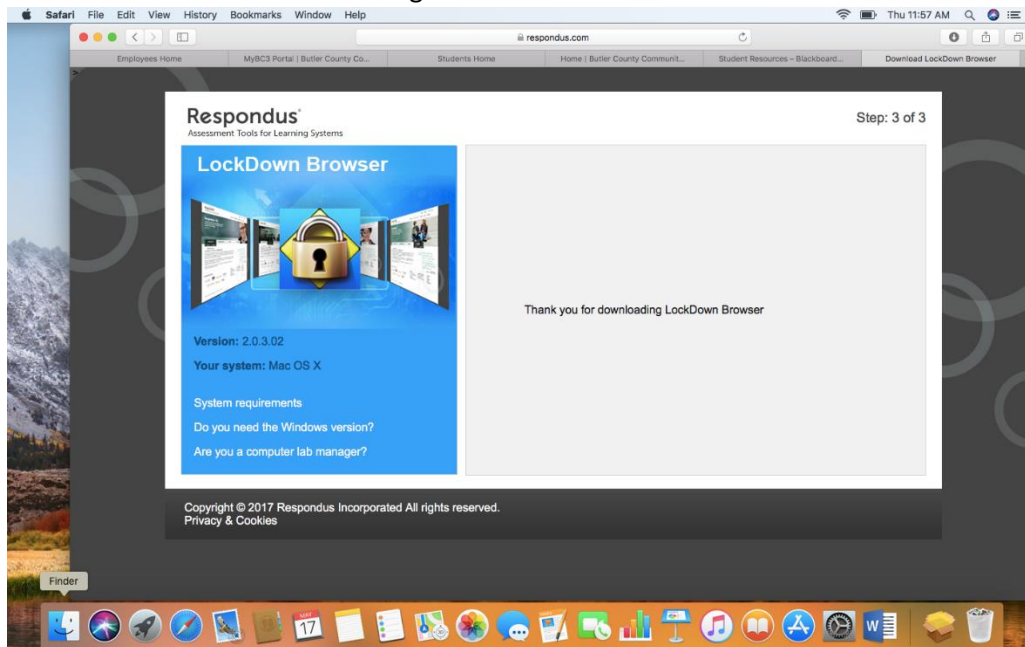


HOW TO INSTALL RESPONDUS LOCKDOWN BROWSER ON A MAC

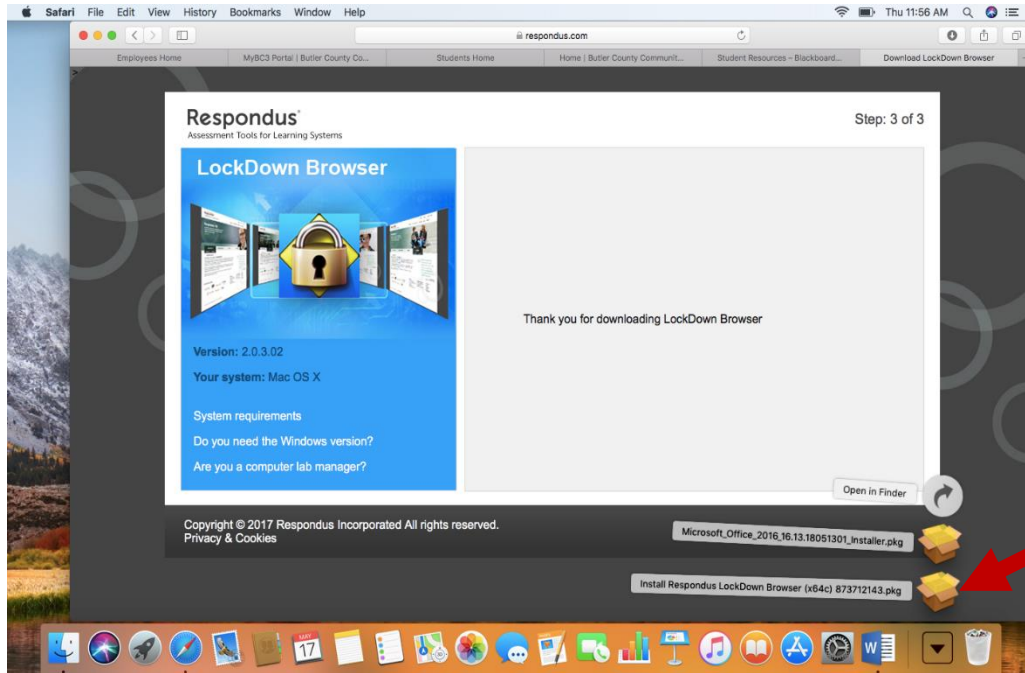
1. Go to **Help & Resources** → **Student Resources** → find the link - **Click this link(unique to BC3) to download the LockDown Browser**



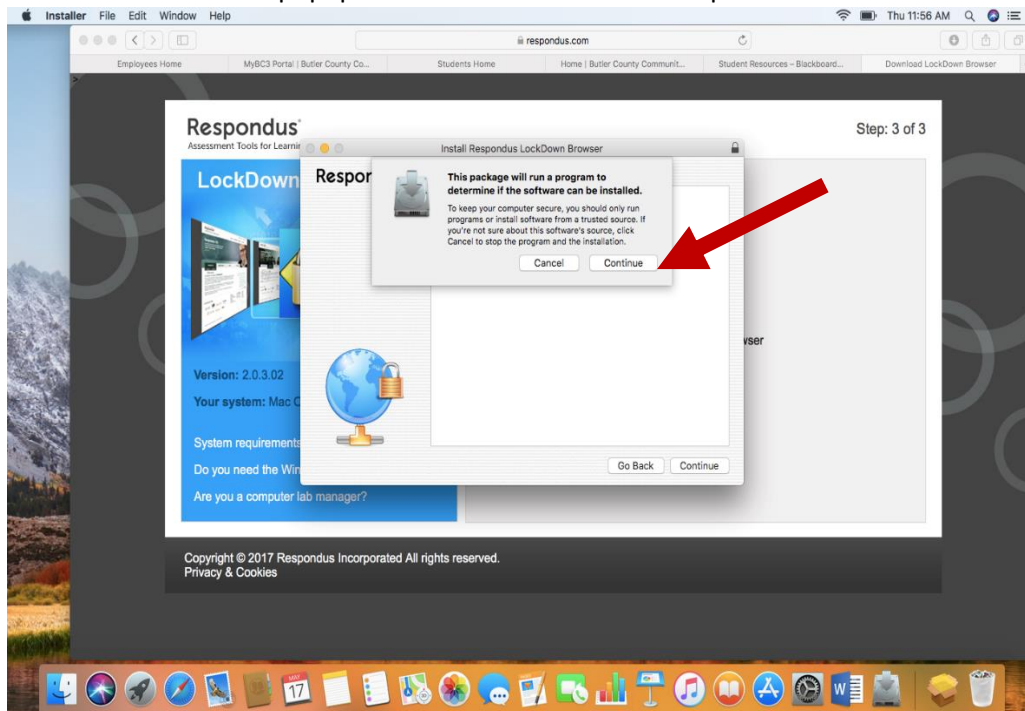
2. Click the **Install Now** button to begin.



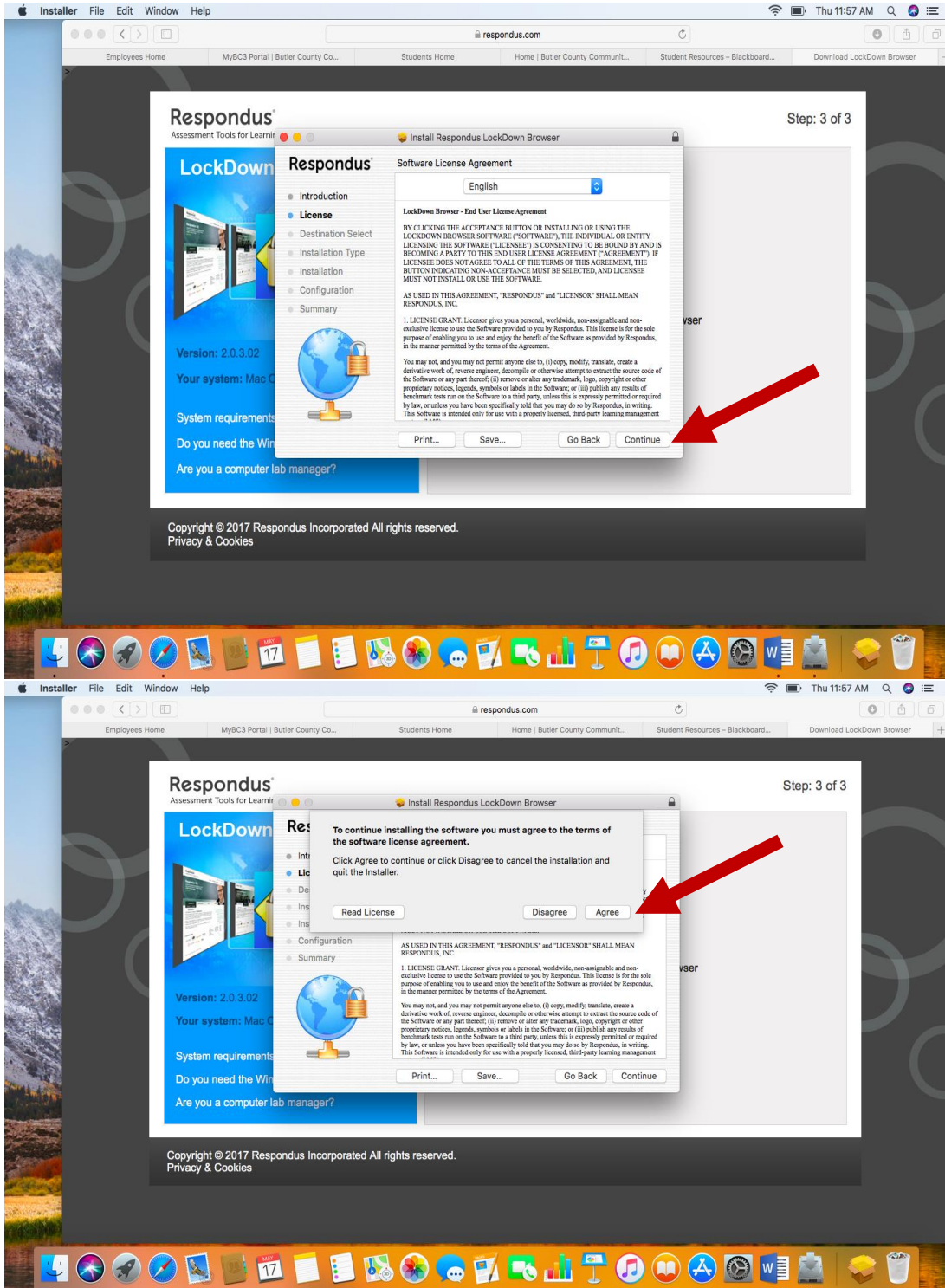
3. Click on **Downloads** and select the **Install Respondus LockDown Browser**.



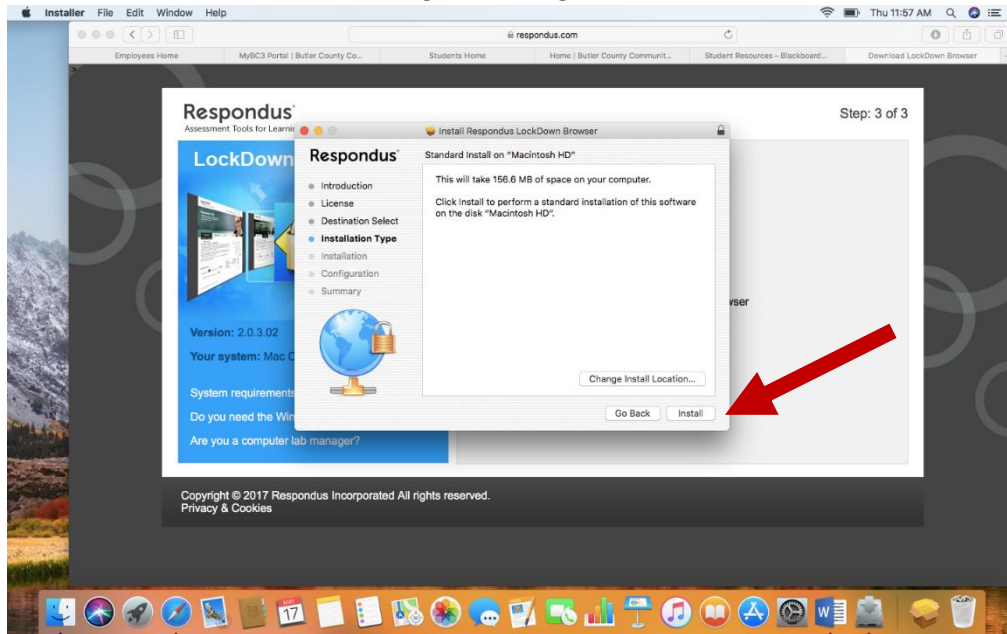
4. Select **Continue** in the popup and then **Continue** in the Respondus window.



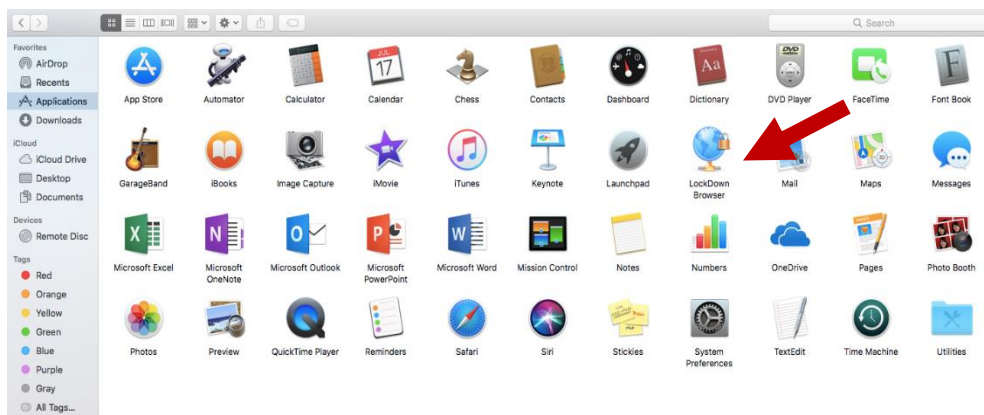
5. Select **Continue** to the next popup to agree to the License Agreement and click **Agree**.



- Now select the Install button to begin installing the software.



- Your computer may ask you to allow you to install the software by entering your password for your computer. Enter your password and click **Install Software**. You will receive an Installation successful message. Click **Close**.
- Next, go to Finder → Applications and find the LockDown Browser (this will look like a world globe with a lock attached) click to open the Lockdown Browser. Log in using your MyBC3 Portal username and password. Navigate to the course and your test.



FYI: You **ONLY** need to use the Respondus LockDown Browser when taking a test that has “Requires Respondus Lockdown Browser” in the name of the quiz or test. You **DO NOT** need to use this browser any other time.