

BC3 announces inductees into international honor societies

Dec. 9, 2020



Krista Koprivnak, 20, of Butler, is shown during Butler County Community College’s drive-thru commencement Saturday, Aug. 1, 2020. Koprivnak earned an associate degree in psychology, returned to BC3 this fall to take an additional 12 credits that will also transfer toward a bachelor’s degree in psychology and is among the college’s inductees into Phi Theta Kappa, an international academic honor society.

(Butler, PA) More than three dozen Butler County Community College students from eight counties have been inducted into BC3’s chapters of international honor societies during biannual ceremonies that recognize the “top students at the top-ranked community college in Pennsylvania,” BC3’s president said.

“They have done a tremendous job in their educational journey,” Dr. Nick Neupauer said of inductees at BC3, selected as the No. 1 community college in Pennsylvania five times since 2015, including for 2020 by BestColleges.com. “This is a significant accomplishment for students and their families.”

Inductions into BC3's Rho Phi chapter of Phi Theta Kappa, an international academic honor society, and into BC3's Delta Kappa chapter of Kappa Beta Delta, an international honor society for business students, are held in the fall and spring semesters.

Each society recognizes scholarship – new members must have a minimum grade-point average of 3.5 – and promotes development and leadership. Students inducted during virtual ceremonies this fall live in Armstrong, Blair, Butler, Crawford, Elk, Jefferson, Lawrence and Mercer counties.

Among Rho Phi's inductees is a member of a BC3 Class of 2020 that with 563 graduates eclipsed 560 for a fourth consecutive year.

Induction “is an accomplishment”

Krista Koprivnak, 20, of Butler, earned president's and dean's lists honors during the fall 2019 and spring 2020 semesters, respectively, and an associate degree in psychology.

Koprivnak returned to her alma mater this fall to take an additional 12 credits that will also transfer toward the bachelor's degree in psychology she will pursue in January from a private four-year institution that holds classes on BC3's main campus in Butler Township.

Being among BC3's inductees into international honor societies “is an accomplishment,” Koprivnak said.

“You can see that all of your long nights drinking coffee and studying for exams paid off, that you did it, that it means something to actually accomplish your goals,” she said. “This makes people want to continue and keep going and try harder to pursue their dreams.”

Koprivnak will take classes from La Roche University at BC3 beginning next month through one of BC3's bachelor's degree-completion partnerships. Her dream is to work with troubled youth in court systems.



Butler County Community College students inducted into BC3's chapters of international honor societies this fall are, top row from left, Katelyn Barnhart, Phi Theta Kappa; Breanna Bruni, Phi Theta Kappa; and Libby Casey, Kappa Beta Delta. Middle row, from left, Jacqueline Cuadros, Kappa Beta Delta; Heather Doan, Phi Theta Kappa; and Avery Ellis, Phi Theta Kappa. Bottom row, from left, Laura Fedor, Phi Theta Kappa; Abigail Foley, Phi Theta Kappa; and Logan Francis, Phi Theta Kappa.

She joins BC3 students this fall who have completed at least 12 credit hours toward an associate degree or six credit hours toward a one-year certificate and who met academic requirements for membership into Rho Phi. All Rho Phi inductees this fall are enrolled in BC3 associate degree programs.

Other new Rho Phi members are ...

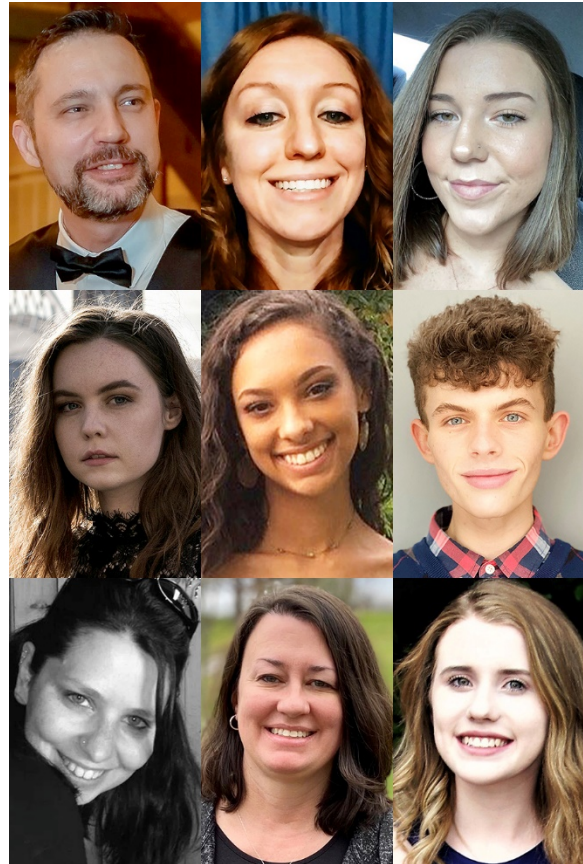
Rho Phi's other newest members from Butler County are Butler residents Amy Christensen, homeland security; Logan Francis, Nursing, R.N.; Bryan (Tony) Gaither, photography; Ashleigh Lumley, Nursing, R.N.; Laycia Madliger, early childhood education (Pre K-4); Ian Moore, business administration; and Brittany Prather, fine arts.

Also from Butler County are Cranberry Township residents Breanna Bruni, psychology; Anthony Figlio, technical trades-HVAC option; Carrie Silvers, human resource management; and Sydni Smith, psychology; Karns City resident Chandley Stuchell, general studies, pre-nursing; Petrolia resident Kelsie Terwilliger, homeland security; Slippery Rock resident Laura Fedor, communications; and Zelienople resident Victoria Kaufman, biological science.

Rho Phi's newest members from Lawrence County are New Castle residents Heather Doan, office administration-executive; and Dylan Scardefield, business management; and Pulaski residents Katelyn Barnhart, criminology; and Amanda Taylor, accounting.

Rho Phi's newest members from Mercer County are Greenville residents Avery Ellis, early childhood education (Pre K-4); and Bradley Molnar, English; and Grove City resident Abigail Foley, medical assistant.

Rho Phi's newest members from Jefferson County are Brockway residents Sonya (Mooney) Fox, Nursing, R.N.; and Tyler Ross, business management; Armstrong County resident Roger Wheat III, Kittanning, criminology; and Crawford County resident Trinity Logan, Linesville, general studies, pre-nursing.



Butler County Community College students inducted into BC3's chapters of international honor societies this fall are, top row from left, Bryan (Tony) Gaither, Phi Theta Kappa; Jessica S. Hughes, Kappa Beta Delta; and Victoria Kaufman, Phi Theta Kappa. Middle row, from left, Trinity Logan, Phi Theta Kappa; Laycia Madliger, Phi Theta Kappa; and Ian Moore, Phi Theta Kappa. Bottom row, from left, Korene Murdie, Kappa Beta Delta; Jennifer M. Parisi, Kappa Beta Delta; and Brittany Prather, Phi Theta Kappa.

Delta Kappa's new members are ...

Students who have completed at least 15 credit hours in BC3's business division, who are pursuing an associate degree in business and who met academic requirements are eligible for membership into Delta Kappa.

Delta Kappa's newest members this fall from Butler County are Butler residents Ely S. Elliott, business administration; and Jacqueline Cuadros, business management; Cabot resident Libby Casey, accounting; Cranberry Township residents Silvers; and Brooke Abraham, business administration; Portersville resident Jessica S. Hughes, human resource management; and Saxonburg resident Korene Murdie, human resource management.

Also inducted into Delta Kappa this fall were Jennifer M. Parisi, Kittanning, Armstrong County, business administration; Alexander M. Karns-Waters, Altoona, Blair County, business administration; Ethen L. Kemmer, Ridgway, Elk County, business management; and Sarah E. McCowin, New Castle, Lawrence County, business administration.

Rho Phi formed at BC3 in 1968 and Delta Kappa, in 2019.



Butler County Community College students inducted into BC3's chapters of international honor societies this fall are, top row from left, Tyler Ross, Phi Theta Kappa; Dylan Scardefield, Phi Theta Kappa; and Carrie Silvers, Kappa Beta Delta and Phi Theta Kappa. Bottom row, from left, Sydni Smith, Phi Theta Kappa; Chandley Stuchell, Phi Theta Kappa; Amanda Taylor, Phi Theta Kappa. Above right, Kelsie Terwilliger, Phi Theta Kappa.